

A demographic and socioeconomic profile of Indigenous Australians in the mining industry

Symposium on Indigenous Peoples, Economic Empowerment and Agreements with Extractive Industries

Melbourne, June 25th to 26th, 2013

Dr. Nicholas Biddle, Centre for Aboriginal Economic Policy Research,
Australian National University

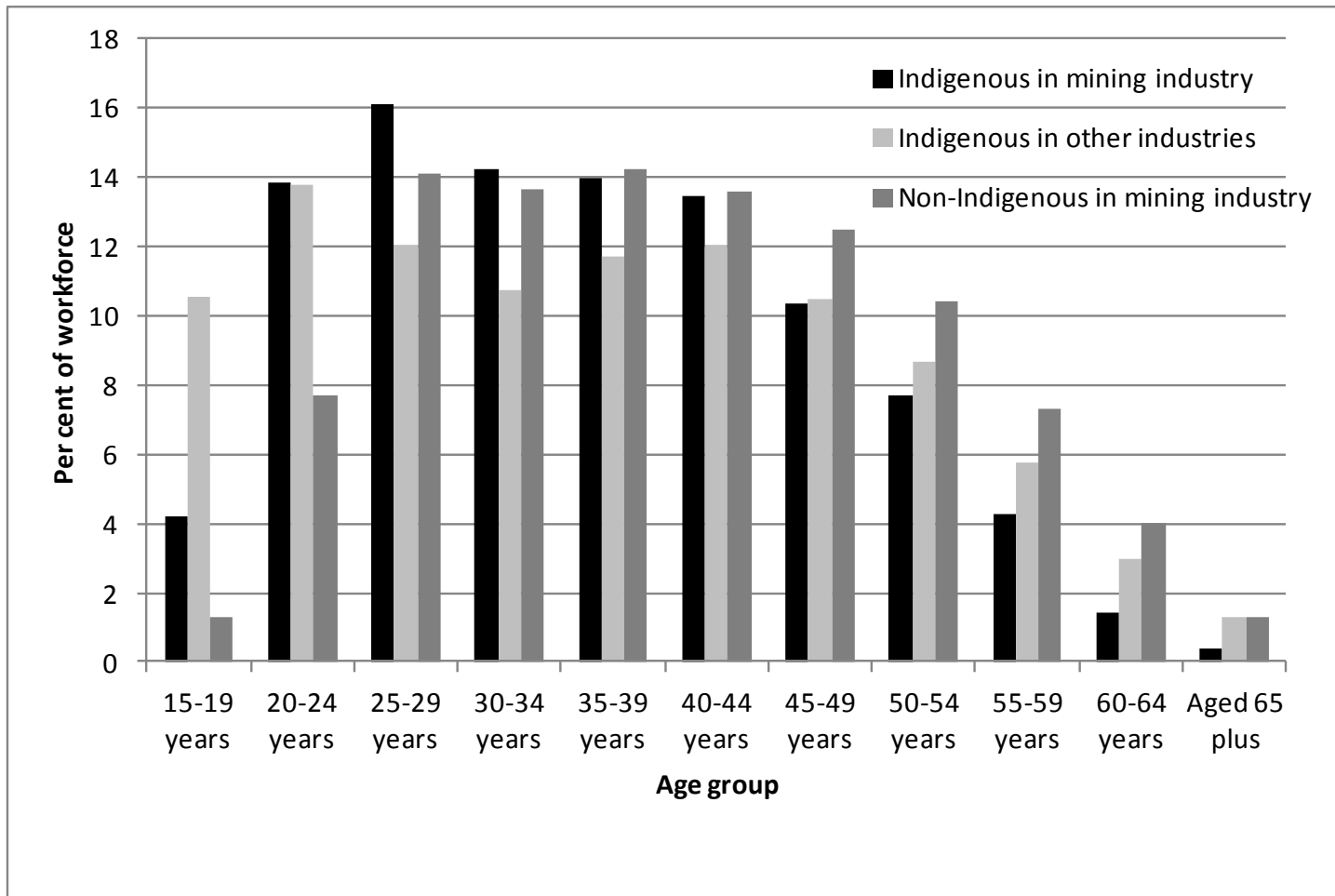
Key demographic and geographic features of the Indigenous population

- **Age structure**
 - The Indigenous population is relatively young.
- **Population change**
 - The Indigenous population is growing at a much faster rate than the non-Indigenous population
- **Structural ageing**
 - The Indigenous population is ageing and projected to age even faster over the next few decades.
- **Mobility**
 - Indigenous Australians are more likely to be away from their place of usual residence at a given point in time and more likely to change their place of usual residence over a given time period.
- **Geography**
 - The Indigenous population is much more likely to live in remote and very remote Australia relative to the non-Indigenous population.
- **Urbanisation**
 - The Indigenous population is likely to become more urban over the next few decades.
- **Socioeconomic**
 - Indigenous Australians tend to have worse socioeconomic outcomes than the non-Indigenous population wherever they live, but the difference is greatest in remote areas

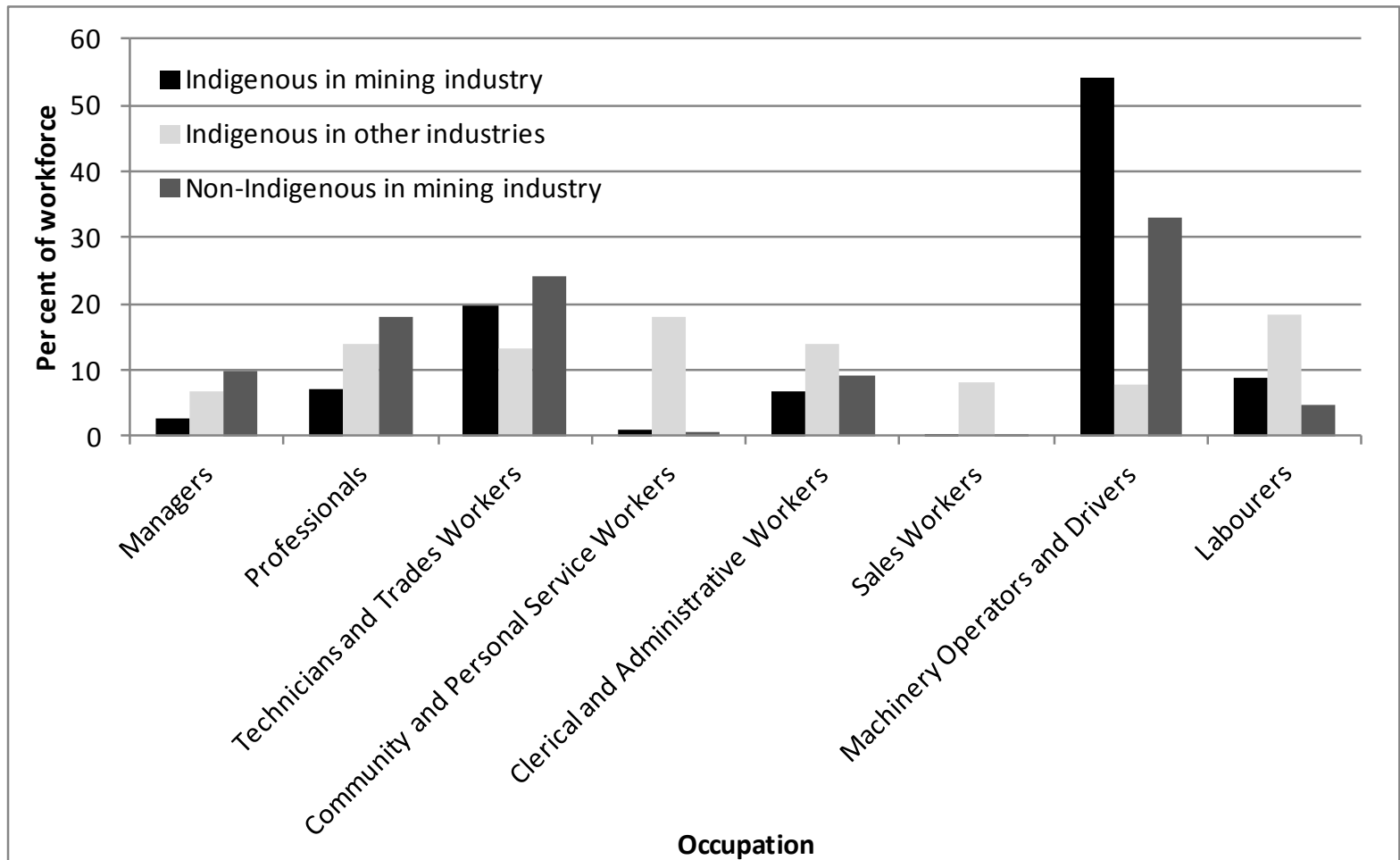
The mining industry and Indigenous Australians – By remoteness

Remoteness area	Number in the mining industry	Per cent of total Australian Indigenous miners	Per cent of Indigenous workforce	Per cent of industry Indigenous	Per cent of Indigenous workers female
Major cities	1,084	20.0	1.9	1.4	24.3
Inner regional	840	15.5	2.8	2.3	15.4
Outer regional	1,301	24.1	4.7	3.9	14.9
Remote	1,095	20.2	11.6	7.1	19.5
Very remote	1,089	20.1	6.4	8.0	20.8
Australian total	5,409	100.0	3.8	3.1	19.0

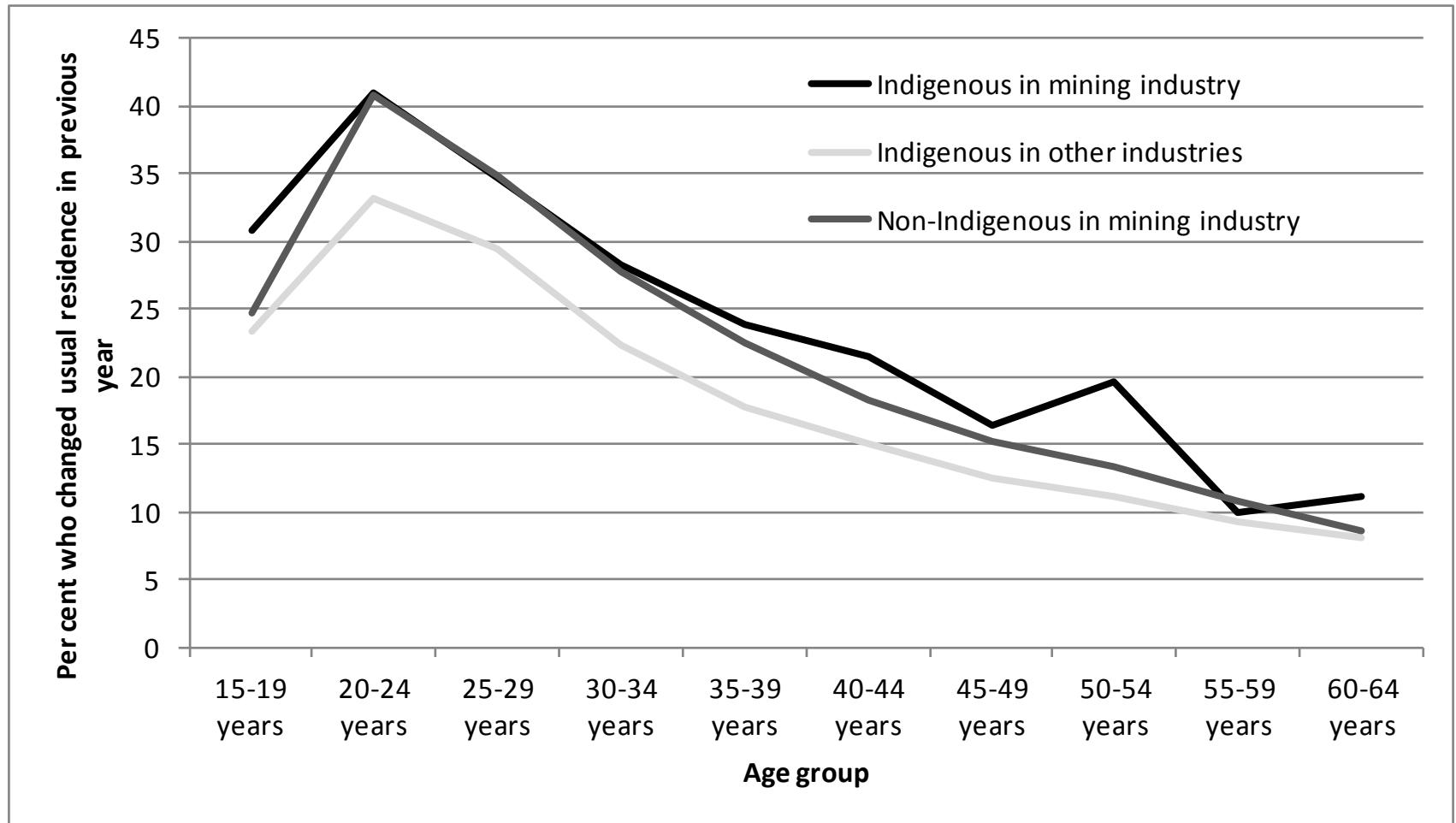
The mining industry and Indigenous Australians – By age



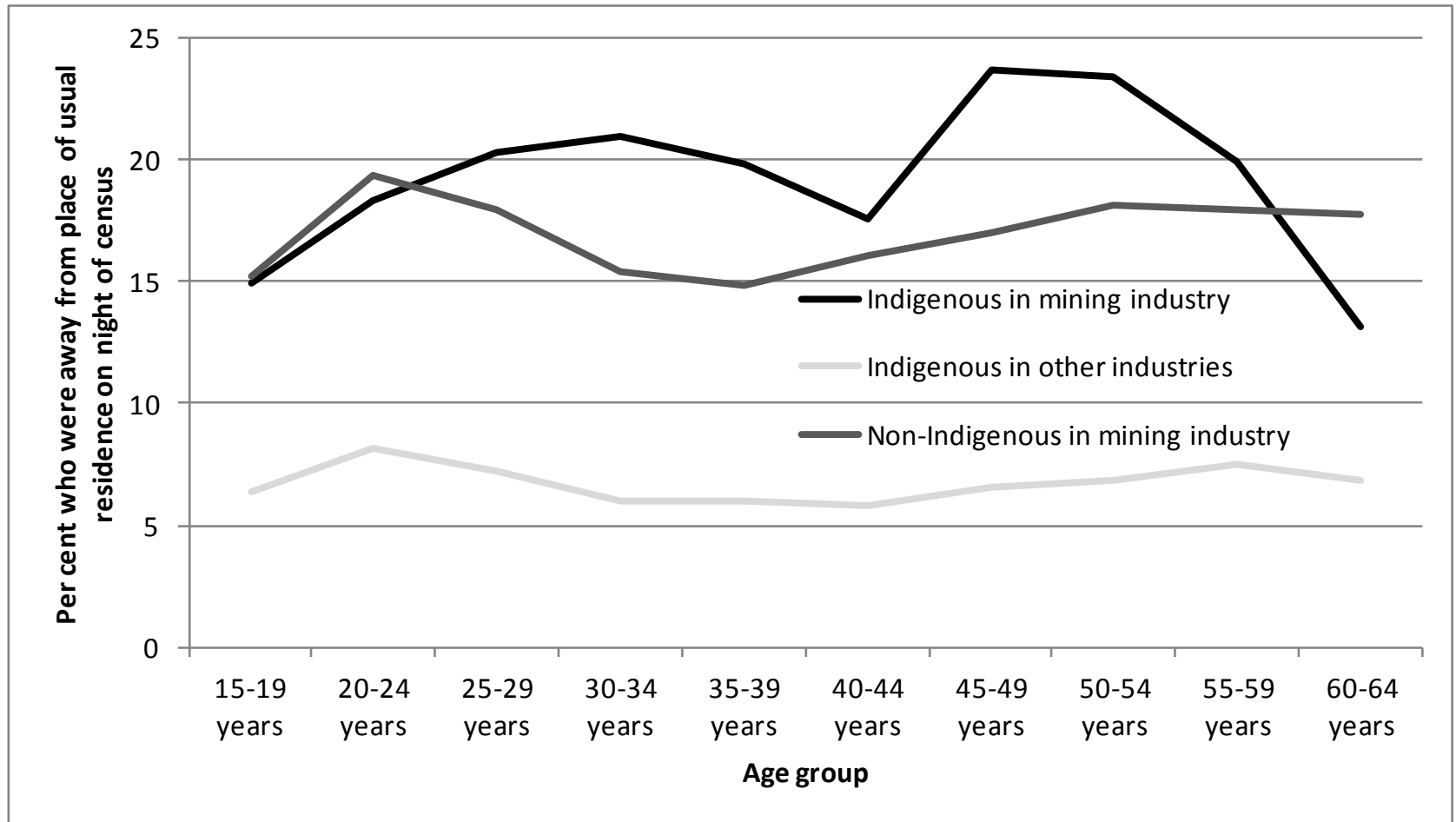
The mining industry and Indigenous Australians – By occupation



The mining industry and Indigenous Australians – Long-term mobility



The mining industry and Indigenous Australians – Short-term mobility



Key points from census based analysis of Indigenous Australians in mining industry

- Understanding Indigenous Australians in the mining industry requires understanding of Indigenous demography and geography
- Has been an increase in Indigenous Australians in the mining industry – From around 2,500 in 2006 to 5,500 in 2011
- Those Indigenous Australians in mining industry often more likely to share characteristics with those non-Indigenous Australians in industry, rather than other Indigenous workers
- Main exception is occupational status. Very few Indigenous Australians in mining industry who are managers or professionals.

nicholas.biddle@anu.edu.au

<http://thenumbercruncher.org/>

<http://caepr.anu.edu.au/population/index.php>